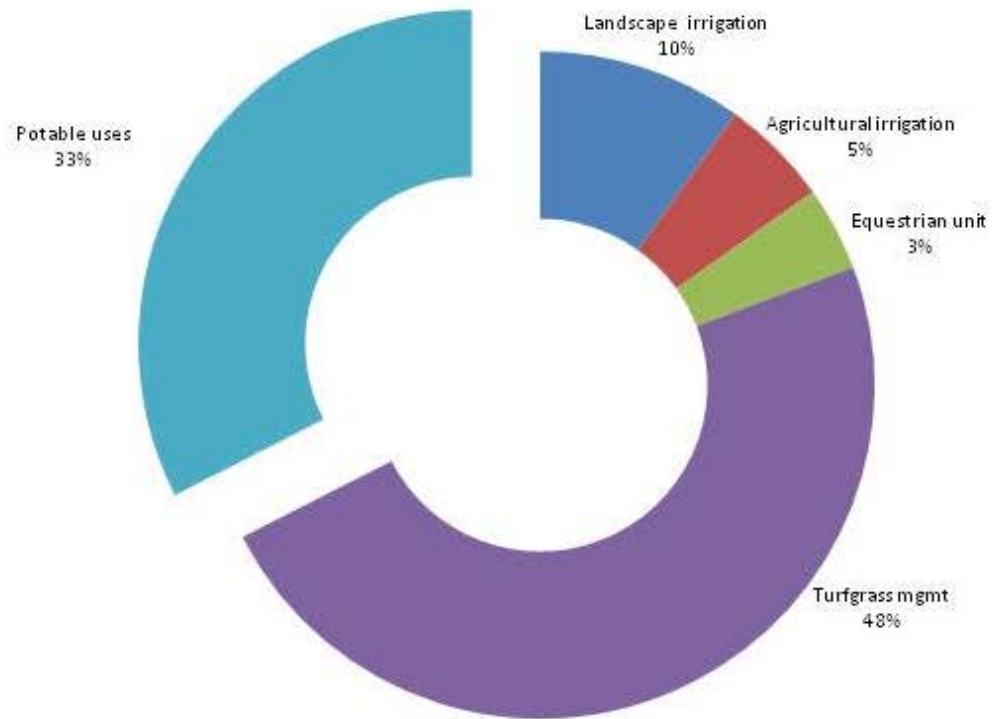


Thacher School Annual Water Dedications (2013)



Thacher School Annual Water Dedications
(based on water use from 2013).

NAME	TYPE	NOTES
THACHER CREEK	Riparian Diversion, Pre-1914	To tank for dispersal, then to irrigation reservoir.
CREEK WELL 1	Groundwater Well	Potable
TRAILHEAD WELL 1	Groundwater Well, non-active	Non-potable, little recharge
TRAILHEAD WELL 2	Groundwater Well	Non-potable, requires blending/treatment (high fe/mg) Lacks recharge
SENIOR CANYON WMC	Water Purveyor/ Purchased Offsite	Piped in from NW corner of property

Thacher School Traditional Water Sources

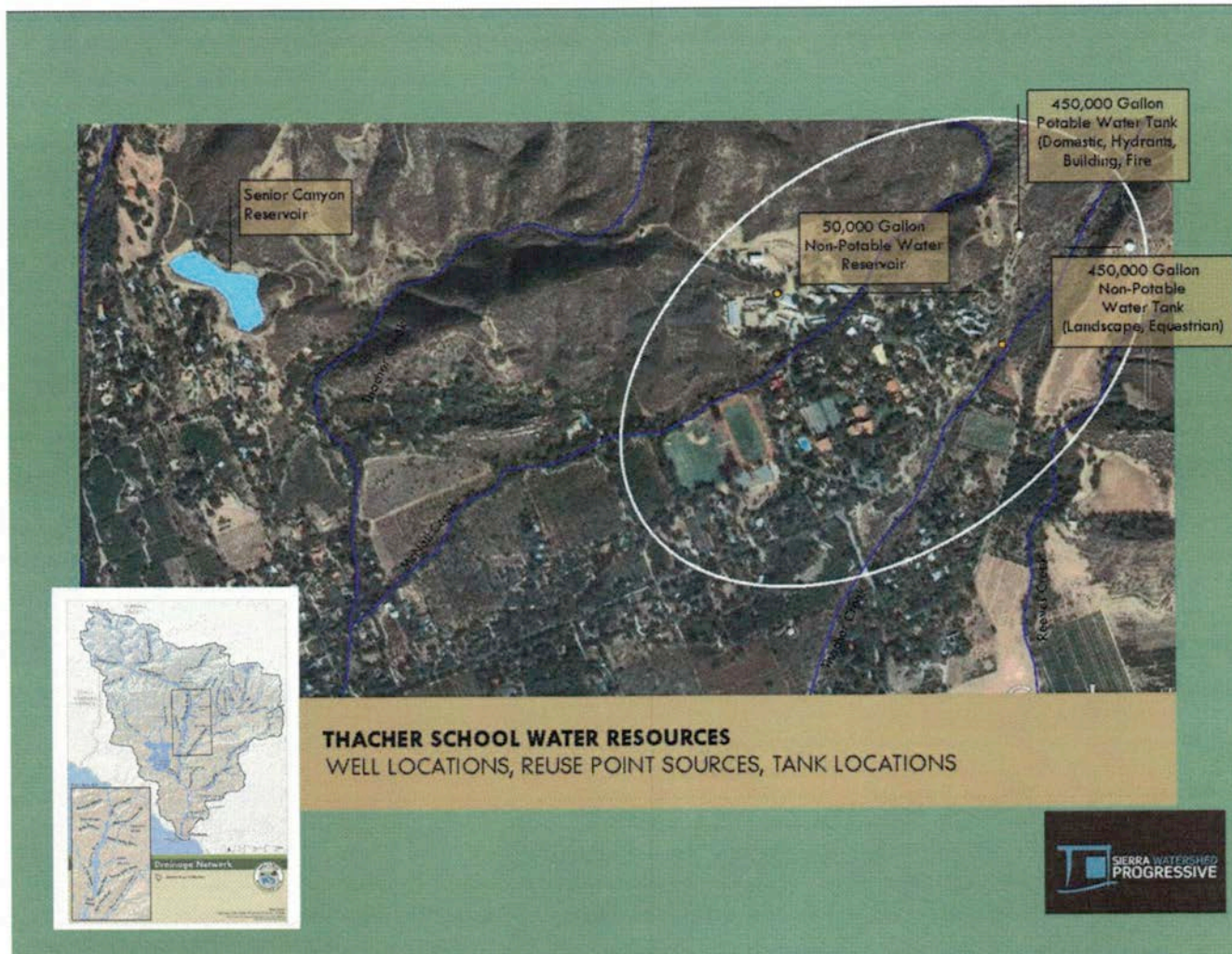
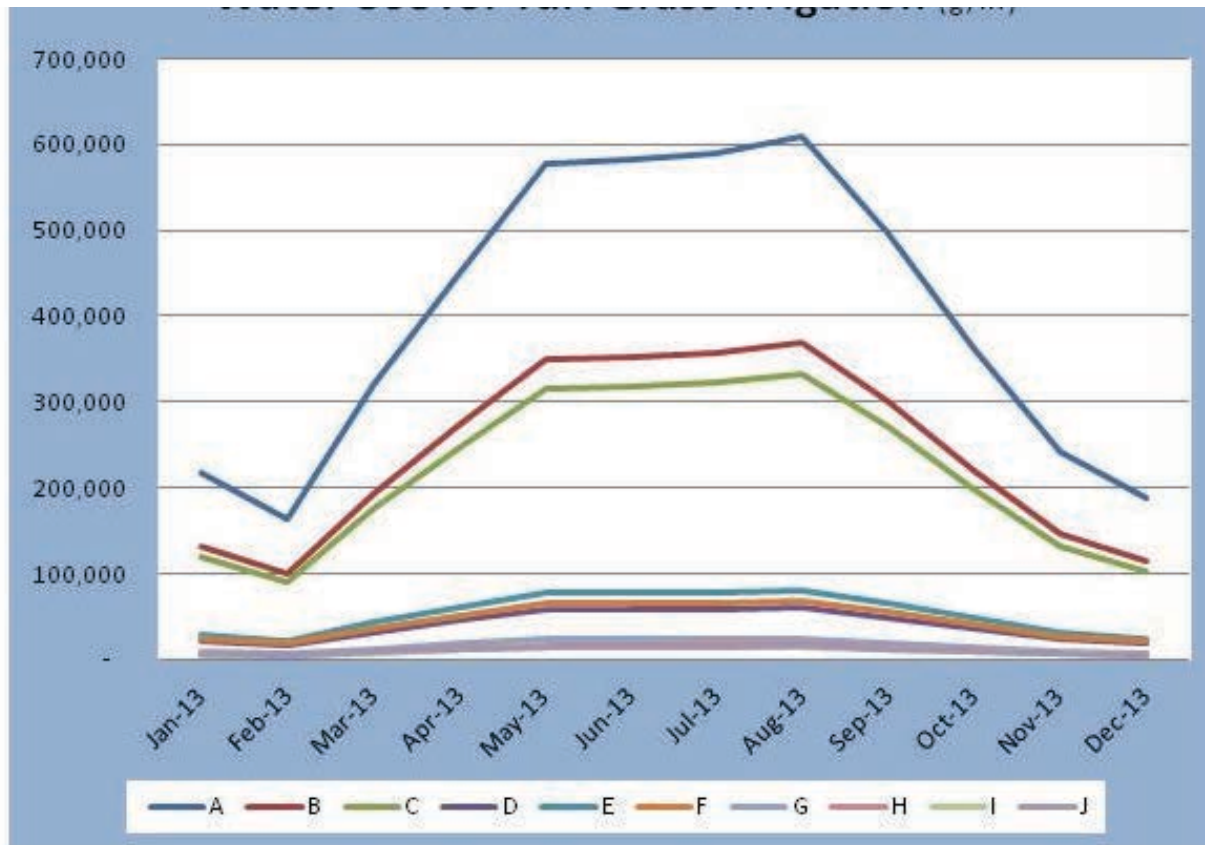


Figure 2.1 Thacher School Water Resources



**Monthly Approximated Water Use for
Thacher School Turfgrass**



IRRIGATED TURFGRASS KEY



Water Savings of Retrofitting with Conservation Fixtures (per flush and g/m)

■ Current Use ■ Areators and Low Flow Fixtures ■ Reduced Pressure

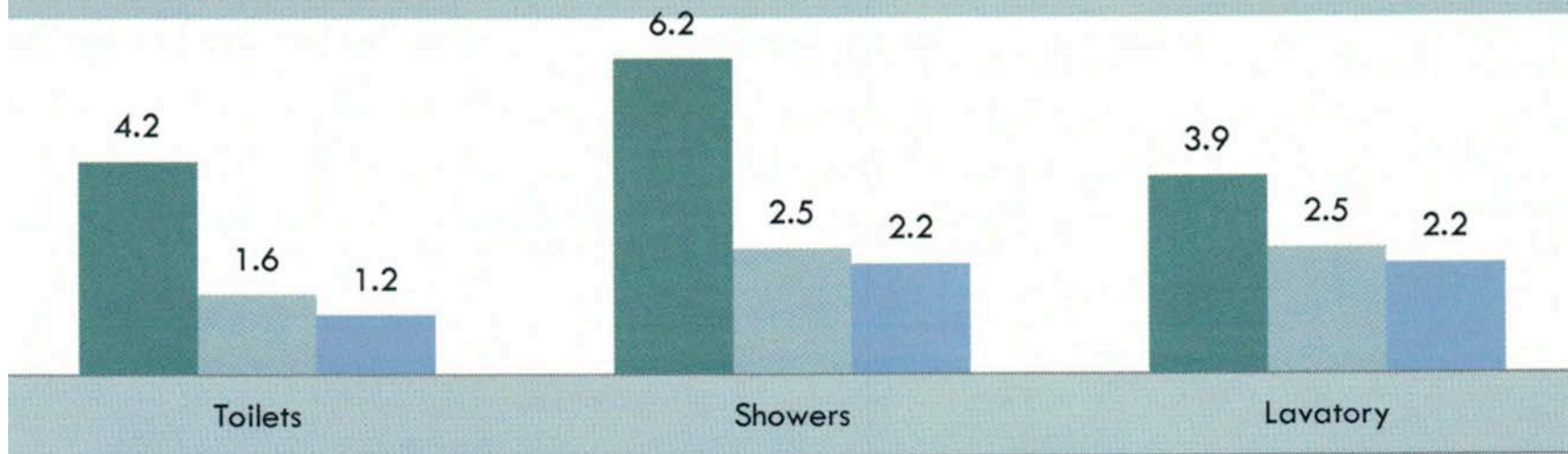
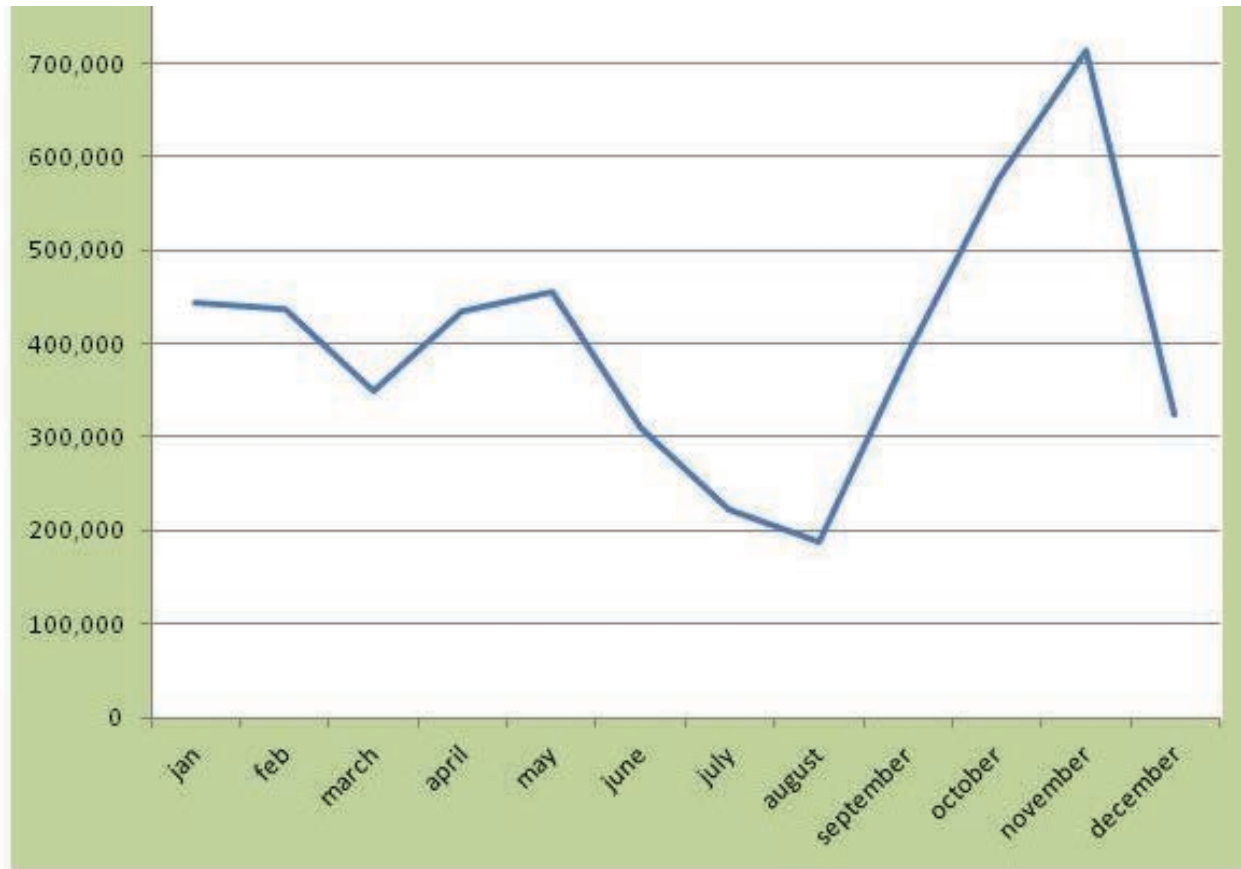


Figure 7.3 Water Savings of Retrofitting with Low Flow Conservation Fixtures
NDRC 2011 and Thacher Water Audit 2014



**Fluctuations in Thacher Wastewater Flows (g)
Reported RWQCB 2013**