

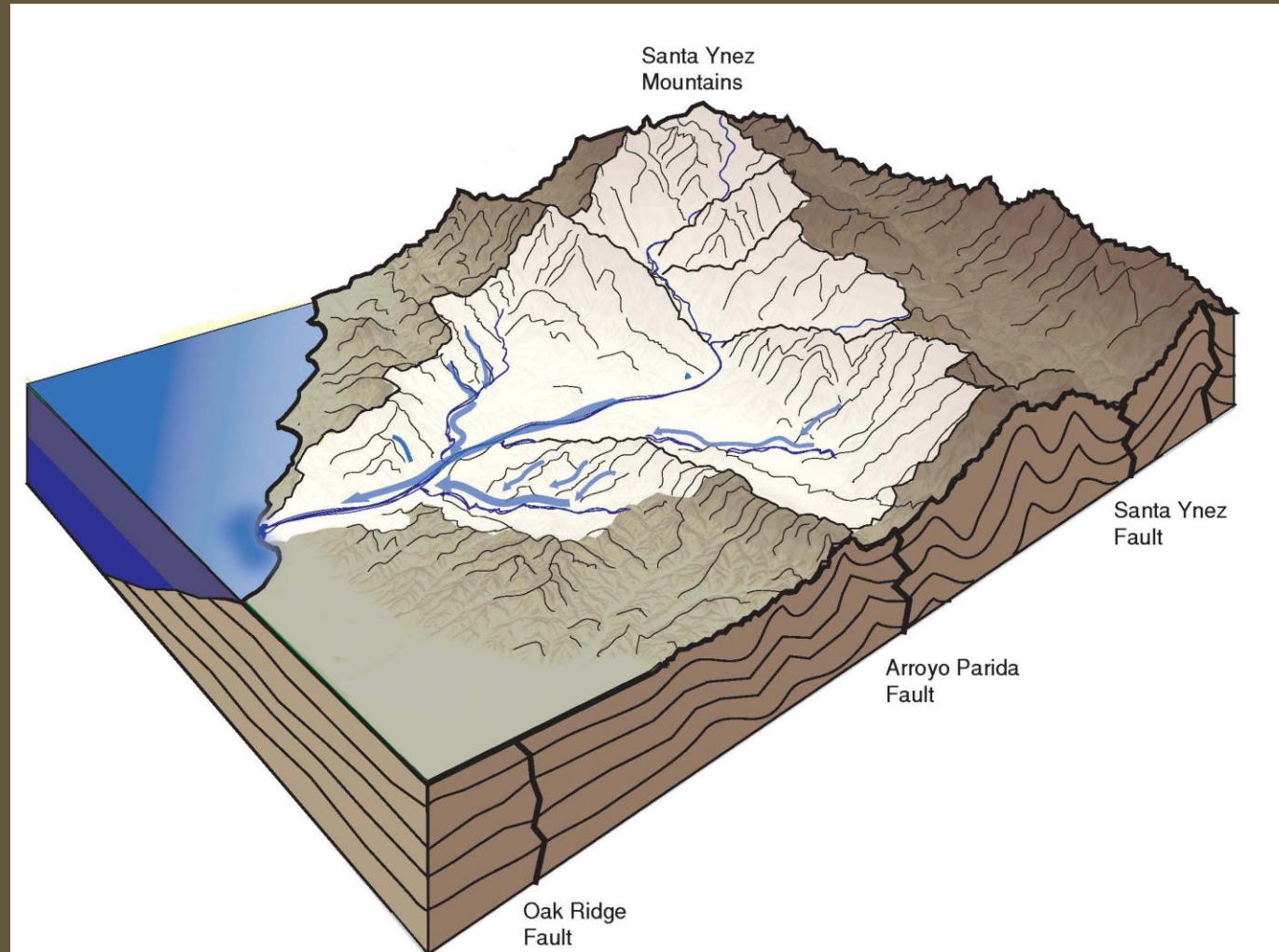
# Overview

- **About watersheds**
- **About watershed management plans**
- **About us**
- **About our watershed management plan**
- **How to stay involved**



**about  
watersheds**

All of the rain that falls on the land in a watershed drains towards a common water body—in our case, the Ventura River.







**Watershed  
boundaries  
define an  
interconnected  
water system.**

# Ventura River Watershed



## Surrounding Major Watersheds



A wide, dry riverbed filled with smooth, light-colored rocks of various sizes. The rocks are densely packed, creating a textured surface. In the background, there are bushes and trees with autumn-colored leaves in shades of orange, yellow, and brown. The sky is clear and bright, suggesting a sunny day. The overall scene is a natural, outdoor setting.

**about  
watershed management plans**





**OUR VISION**  
 Healthy catchments, quality water — always

**OUR ROLE**  
 Capture, store and supply quality raw water from well-managed catchments

**OUR VALUES**  
 Safe - we ensure the health, safety and wellbeing of people at the SCA  
 Professional - we seek to adopt the highest professional standards in all our dealings  
 Ethical - we are honest and fair in all our dealings  
 Accountable - we are accountable for our decisions and actions

**GOAL 1  
 High quality water supply**

Intended outcomes	Performance indicators and targets	Corporate strategies
<b>Raw water delivered meets agreed quality and quality specifications</b>	Compliance with water quality standards (Target: 100%) Compliance with the 2008 Australian Drinking Water Guidelines (Target: 100%) Compliance with water quality (Target: 100%) Compliance with the 2008 Australian Drinking Water Guidelines (Target: 100%) Compliance with the 2008 Australian Drinking Water Guidelines (Target: 100%)	Operate our water supply system in accordance with Sydney Catchment Management Plan (SCM), operating forms, water management forms, flow water supply operations and Sydney Catchment Authority SCA procedures Monitor and analyse flow and stored water quality and quantity Develop and implement the asset maintenance strategy plan for water quality assets Review and improve O&M Safety Management Program
<b>Our dams and delivery systems are safe, efficient, well-operated and maintained</b>	Compliance with the 2008 Australian Drinking Water Guidelines (Target: 100%) Compliance with the 2008 Australian Drinking Water Guidelines (Target: 100%) Compliance with the 2008 Australian Drinking Water Guidelines (Target: 100%) Compliance with the 2008 Australian Drinking Water Guidelines (Target: 100%)	Review and improve O&M Safety Management Program Work with Sydney Catchment Authority to develop and implement Review and improve O&M Safety Management Program
<b>Successfully operate our water supply system during droughts, floods, fires and other extreme events</b>	Compliance with the 2008 Australian Drinking Water Guidelines (Target: 100%) Compliance with the 2008 Australian Drinking Water Guidelines (Target: 100%) Compliance with the 2008 Australian Drinking Water Guidelines (Target: 100%) Compliance with the 2008 Australian Drinking Water Guidelines (Target: 100%)	Review and improve O&M Safety Management Program Work with Sydney Catchment Authority to develop and implement Review and improve O&M Safety Management Program
<b>Water supply planning and asset investment keep pace with our current and future requirements</b>	Compliance with the 2008 Australian Drinking Water Guidelines (Target: 100%) Compliance with the 2008 Australian Drinking Water Guidelines (Target: 100%) Compliance with the 2008 Australian Drinking Water Guidelines (Target: 100%) Compliance with the 2008 Australian Drinking Water Guidelines (Target: 100%)	Review and improve O&M Safety Management Program Work with Sydney Catchment Authority to develop and implement Review and improve O&M Safety Management Program

**GOAL 2  
 Sustainable catchments**

Intended outcomes	Performance indicators and targets	Corporate strategies
<b>Reduced environmental degradation to improve water quality</b>	Percentage of total population served where risk to water quality has been reduced (Target: 100% of total population served)	Operate our water supply system in accordance with Sydney Catchment Management Plan (SCM), operating forms, water management forms, flow water supply operations and Sydney Catchment Authority SCA procedures Monitor and analyse flow and stored water quality and quantity Develop and implement the asset maintenance strategy plan for water quality assets Review and improve O&M Safety Management Program
<b>Reduced priority pollutants</b>	Percentage of total population served where risk to water quality has been reduced (Target: 100% of total population served)	Operate our water supply system in accordance with Sydney Catchment Management Plan (SCM), operating forms, water management forms, flow water supply operations and Sydney Catchment Authority SCA procedures Monitor and analyse flow and stored water quality and quantity Develop and implement the asset maintenance strategy plan for water quality assets Review and improve O&M Safety Management Program
<b>Reduced environmental impacts of our operations</b>	Percentage of total population served where risk to water quality has been reduced (Target: 100% of total population served)	Operate our water supply system in accordance with Sydney Catchment Management Plan (SCM), operating forms, water management forms, flow water supply operations and Sydney Catchment Authority SCA procedures Monitor and analyse flow and stored water quality and quantity Develop and implement the asset maintenance strategy plan for water quality assets Review and improve O&M Safety Management Program
<b>Development and activities comply with Sustainable Catchments: The Regional Plan for the drinking water catchments of Sydney and adjacent regional centres</b>	Percentage of total population served where risk to water quality has been reduced (Target: 100% of total population served)	Operate our water supply system in accordance with Sydney Catchment Management Plan (SCM), operating forms, water management forms, flow water supply operations and Sydney Catchment Authority SCA procedures Monitor and analyse flow and stored water quality and quantity Develop and implement the asset maintenance strategy plan for water quality assets Review and improve O&M Safety Management Program
<b>Our assets are managed to international standards</b>	Percentage of total population served where risk to water quality has been reduced (Target: 100% of total population served)	Operate our water supply system in accordance with Sydney Catchment Management Plan (SCM), operating forms, water management forms, flow water supply operations and Sydney Catchment Authority SCA procedures Monitor and analyse flow and stored water quality and quantity Develop and implement the asset maintenance strategy plan for water quality assets Review and improve O&M Safety Management Program
<b>Improved awareness about how the catchment communities contribute to protecting water quality</b>	Percentage of total population served where risk to water quality has been reduced (Target: 100% of total population served)	Operate our water supply system in accordance with Sydney Catchment Management Plan (SCM), operating forms, water management forms, flow water supply operations and Sydney Catchment Authority SCA procedures Monitor and analyse flow and stored water quality and quantity Develop and implement the asset maintenance strategy plan for water quality assets Review and improve O&M Safety Management Program

**GOAL 3  
 Strategic partnerships**

Intended outcomes	Performance indicators and targets	Corporate strategies
<b>Working with local government to implement Sustainable Catchments: The Regional Plan for the drinking water catchments of Sydney and adjacent regional centres</b>	Percentage of total population served where risk to water quality has been reduced (Target: 100% of total population served)	Operate our water supply system in accordance with Sydney Catchment Management Plan (SCM), operating forms, water management forms, flow water supply operations and Sydney Catchment Authority SCA procedures Monitor and analyse flow and stored water quality and quantity Develop and implement the asset maintenance strategy plan for water quality assets Review and improve O&M Safety Management Program
<b>Working with other government agencies to deliver the Metropolitan Water Plan</b>	Percentage of total population served where risk to water quality has been reduced (Target: 100% of total population served)	Operate our water supply system in accordance with Sydney Catchment Management Plan (SCM), operating forms, water management forms, flow water supply operations and Sydney Catchment Authority SCA procedures Monitor and analyse flow and stored water quality and quantity Develop and implement the asset maintenance strategy plan for water quality assets Review and improve O&M Safety Management Program
<b>Working closely with the Department of Environment and Climate Change to manage the Special Areas for water quality and biodiversity</b>	Percentage of total population served where risk to water quality has been reduced (Target: 100% of total population served)	Operate our water supply system in accordance with Sydney Catchment Management Plan (SCM), operating forms, water management forms, flow water supply operations and Sydney Catchment Authority SCA procedures Monitor and analyse flow and stored water quality and quantity Develop and implement the asset maintenance strategy plan for water quality assets Review and improve O&M Safety Management Program

**GOAL 4  
 Successful business**

Intended outcomes	Performance indicators and targets	Corporate strategies
<b>People are safe at the SCA</b>	Percentage of total population served where risk to water quality has been reduced (Target: 100% of total population served)	Operate our water supply system in accordance with Sydney Catchment Management Plan (SCM), operating forms, water management forms, flow water supply operations and Sydney Catchment Authority SCA procedures Monitor and analyse flow and stored water quality and quantity Develop and implement the asset maintenance strategy plan for water quality assets Review and improve O&M Safety Management Program
<b>We have the right people with the right skills at the right time</b>	Percentage of total population served where risk to water quality has been reduced (Target: 100% of total population served)	Operate our water supply system in accordance with Sydney Catchment Management Plan (SCM), operating forms, water management forms, flow water supply operations and Sydney Catchment Authority SCA procedures Monitor and analyse flow and stored water quality and quantity Develop and implement the asset maintenance strategy plan for water quality assets Review and improve O&M Safety Management Program
<b>We have a rigorous risk management framework</b>	Percentage of total population served where risk to water quality has been reduced (Target: 100% of total population served)	Operate our water supply system in accordance with Sydney Catchment Management Plan (SCM), operating forms, water management forms, flow water supply operations and Sydney Catchment Authority SCA procedures Monitor and analyse flow and stored water quality and quantity Develop and implement the asset maintenance strategy plan for water quality assets Review and improve O&M Safety Management Program
<b>Tools, systems and knowledge keep pace with our business</b>	Percentage of total population served where risk to water quality has been reduced (Target: 100% of total population served)	Operate our water supply system in accordance with Sydney Catchment Management Plan (SCM), operating forms, water management forms, flow water supply operations and Sydney Catchment Authority SCA procedures Monitor and analyse flow and stored water quality and quantity Develop and implement the asset maintenance strategy plan for water quality assets Review and improve O&M Safety Management Program
<b>We meet the Statement of Financial Performance targets</b>	Percentage of total population served where risk to water quality has been reduced (Target: 100% of total population served)	Operate our water supply system in accordance with Sydney Catchment Management Plan (SCM), operating forms, water management forms, flow water supply operations and Sydney Catchment Authority SCA procedures Monitor and analyse flow and stored water quality and quantity Develop and implement the asset maintenance strategy plan for water quality assets Review and improve O&M Safety Management Program
<b>The community is confident about how we make our business decisions</b>	Percentage of total population served where risk to water quality has been reduced (Target: 100% of total population served)	Operate our water supply system in accordance with Sydney Catchment Management Plan (SCM), operating forms, water management forms, flow water supply operations and Sydney Catchment Authority SCA procedures Monitor and analyse flow and stored water quality and quantity Develop and implement the asset maintenance strategy plan for water quality assets Review and improve O&M Safety Management Program

**Handbook for Developing Watershed Plans to Restore and Protect Our Waters**

UNITED STATES ENVIRONMENTAL PROTECTION AGENCY

# The California Watershed Assessment Manual

## Volume I



# INTEGRATED WATERSHED PROTECTION PLAN

## FISCAL YEAR 2005 ZONE 1

PREPARED BY:  
**VENTURA COUNTY WATERSHED PROTECTION DISTRICT**

VENTURA COUNTY, CALIFORNIA

MAY 16, 2005



# watershed management plans

- **Cross-jurisdictional**
- **Defined by watershed boundaries, not political or institutional boundaries**
- **Multi-stakeholder**
- **Non-regulatory**





**What is in a  
typical  
watershed  
management  
plan?**





# typical plan contents

- 1. Watershed characterization**
- 2. Description of watershed issues**
- 3. Goals and objectives**
- 4. Recommended projects**
- 5. Implementation program**

# typical plan contents

## Watershed Characterization

location, climate, subwatersheds, river reaches, estuary, ocean interface, water quantity, water quality, regional ecological context, terrestrial ecosystems, aquatic ecosystems, demographics, economic status, government jurisdictions, land use, public access opportunities, hazards



# typical plan contents

## Watershed Issues

poor water quality

inadequate water supply

degraded habitat

flooding

lack of access to open space

uninformed/unengaged citizens

climate change

# typical plan contents

## Goal 1

### Objective 1a

Project

Project

### Objective 1b

Project

Project

### Objective 1c

Project

Project



# typical plan contents - example

**GOAL:** *Maintain and protect the quality of surface water and groundwater found in these watersheds.*

**OBJECTIVE 1:** Establish baseline water quality data of relevant constituents for water bodies in these watersheds to ensure water quality is protected, that early detection to prevent problems is possible, and to track changes in water quality over time.

**Implementation 1A:** Continue to compile a list of other entities conducting water quality and invasive species monitoring in these watersheds and determine: constituents monitored, frequency, locations, and purpose of the monitoring.

**Implementation 1B:** Support the coordination of water quality monitoring and interpretation in these watersheds through use of mechanisms such as compatible Quality Assurance Project Plans (QAPP), database formats, and facilitation of roundtable discussions to understand the data.

**Implementation 1C:** Encourage responsible agencies to work together to provide funding for establishing a comprehensive monitoring program that will provide data to all agencies, and eliminate redundancies. This data could then be used to identify problems and recommend corrective actions.

**Implementation 1D:** Partner with the water purveyors, Resource Conservation Districts, Natural Resources Conservation Service, Cal Poly, and others to monitor the effectiveness of voluntary management practices for protecting water quality; ensure that data is kept confidential and summaries of the information do not identify any landowner.

**Implementation 1E:** Support the initiation of a volunteer water quality monitoring program including monitoring at the confluences of creek to main stem and creeks to reservoirs.

**Implementation 1F:** Encourage EPA to conduct a reservoir bottom sediment study of Nacimiento Reservoir to better understand mercury contamination.

**OBJECTIVE 2:** Identify potential contaminant sources, magnitude of threat to water quality, possible preventive or mitigation measures, and gaps in knowledge.

# typical plan contents

Priority projects are often identified as:

“Short-term”

“High priority”

“Urgent”

“Catalytic”



about us



# Ventura River Watershed Council

## regular participants

### Water and Sanitary

Casitas Municipal Water District

City of Ventura

Meiners Oaks Water District

Ojai Basin Groundwater Mgmt.  
Agency

Ojai Valley Sanitary District

Ventura River County Water District

### Government

California Coastal Conservancy

California Coastal Conservancy

California Dept. of Fish and Game

Calif. Regional Water Quality Control Board

City of Ojai, Public Works

City of Ventura, Water Department

Ventura County Public Works Department

Ventura Co. Watershed Protection District

Ventura Co. Supervisor Steve Bennett's  
Office

Watersheds Coalition of Ventura County

# Ventura River Watershed Council

## regular participants

### Land Management/Recreation

Ojai Valley Land Conservancy

University of California Cooperative Extension

Ventura Hillside Conservancy

Ventura Co. Resource Conservation District

### Business/Landowner/Citizens

Aera Energy

Citizens

Consultants

Farm Bureau of Ventura County

Taylor Ranch

Ventura Co. Agricultural Irrigated Lands Group

### Nonprofit Organizations

Friends of the Ventura River

Matilija Coalition

Ojai Valley Green Coalition

Santa Barbara Channelkeeper

Surfrider Foundation

Ventura Citizens for Hillside  
Preservation

Project Understanding



# Ventura River Watershed Council mission

To facilitate and support efforts by individuals, agencies, and organizations to maintain and improve the health and sustainability of the Ventura River watershed for the benefit of the people and ecosystems that depend upon it.





# Ventura River Watershed Council milestones

- May, 2006** Ventura River Watershed Council formed
- Nov, 2006** Countywide Integrated Regional Water Management Plan completed
- 2008-2012** \$4,214,400 in grant funding awarded (studies, models, watershed coordinator, equipment upgrades, spreading grounds, restoration)
- 2011-2012** Watershed coordinator, mission statement, governance charter, website, outreach

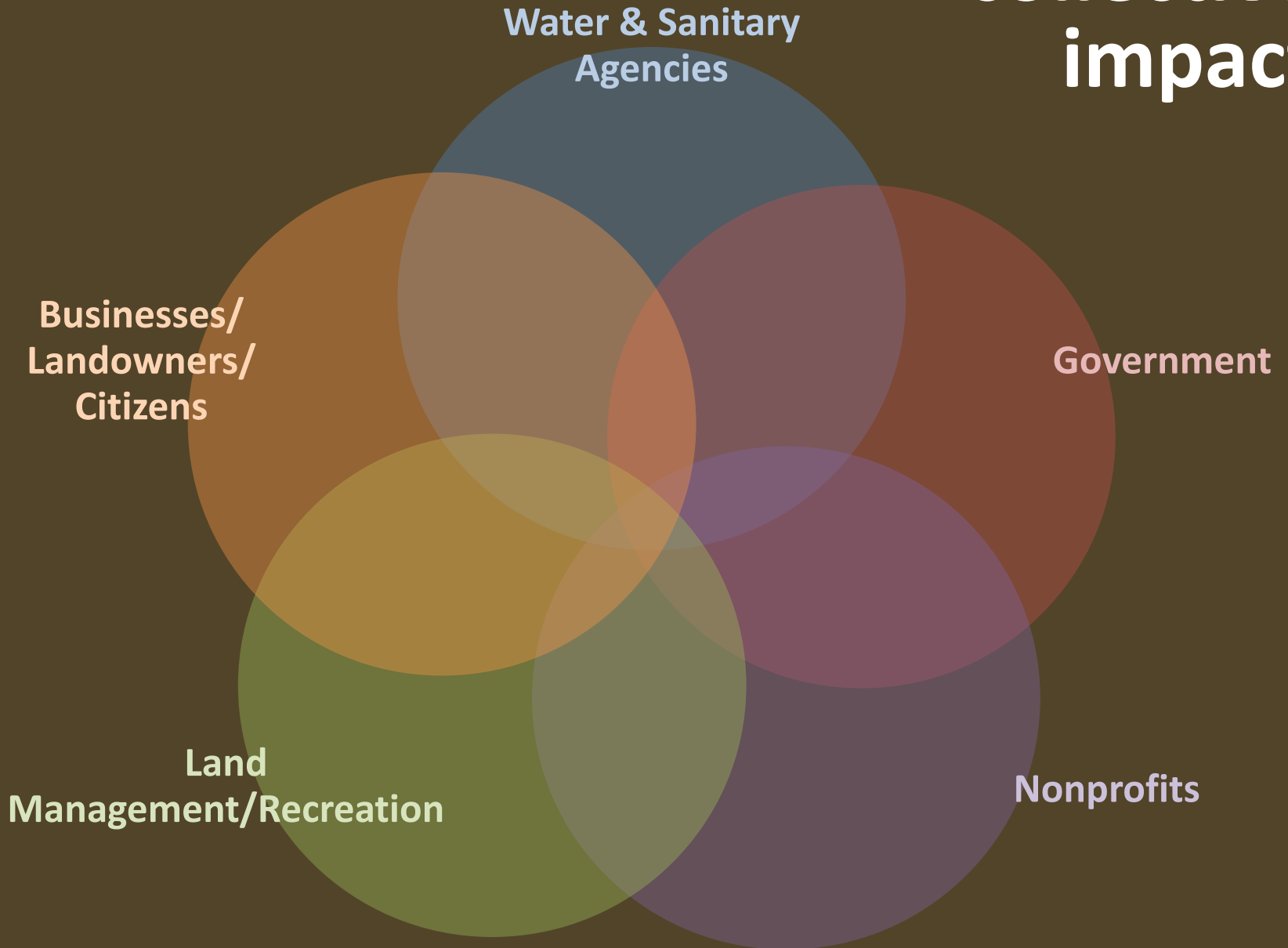


**about our plan**

# the purpose of our plan

- To **tell the story** of the watershed and its many interdependencies.
- To identify and **prioritize** water-related concerns in the watershed.
- To outline a strategy to collectively solve our shared watershed problems and **collectively manage** our shared resources.
- To better position ourselves for **funding**.

# collective impact





# **our goals (draft)**

- 1. Enough local water**
- 2. Clean water**
- 3. Smart flood protection**
- 4. Healthy ecosystems**
- 5. Nature-based refuge and recreation**
- 6. Smart use of land and resources**
- 7. Preparedness and adaptability**
- 8. Engaged citizens**

# enough local water

Surface water and groundwater of a sufficient quantity and rate of flow to maintain independence from imported water and reliably support ecosystem and human needs in the watershed.



# clean water

**Clean water**  
**Surface water and**  
**groundwater of**  
**sufficient quality to**  
**meet regulatory**  
**requirements and**  
**support ecosystem**  
**and human needs in**  
**the watershed.**





# smart flood protection

Effective flood management that integrates with natural watershed hydrology and water supply goals.





# healthy ecosystems

Healthy aquatic and terrestrial ecosystem structures, functions, and processes that support a diversity of native habitats and a more natural watershed hydrology.



# nature-based refuge and recreation

Ample opportunities for the public to enjoy nature.





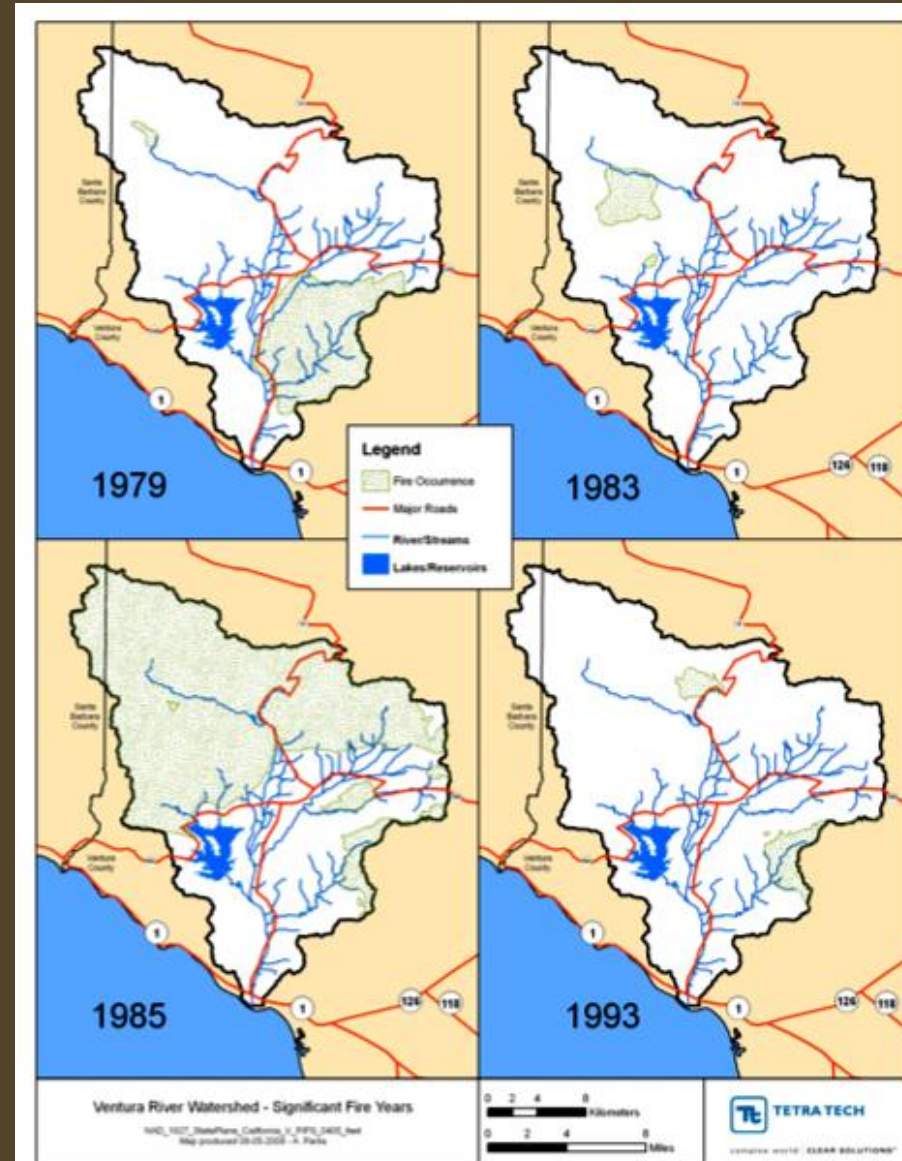
# smart use of land and resources

Use of land and resources in a manner that supports human needs and social goals, and is compatible with healthy ecosystem goals.



# preparedness and adaptability

Watershed management that looks ahead, thinks creatively, and is able to respond quickly to new information, change and crisis.





# engaged citizens

Ample opportunities  
for citizens to learn  
about the watershed  
and contribute to its  
well-being.







how to stay  
involved



Get on our [email](#) list to receive updates and announcements.

Check out our [website](#) for updates.

Attend Watershed Council [meetings](#).

**Watershed Coordinator:**

**Lorraine Walter**

[lorraine@ovlc.org](mailto:lorraine@ovlc.org)

[www.venturawatershed.org](http://www.venturawatershed.org)

**805/649-6852 x4**