



Presentation to the Ventura River Watershed Council September 6, 2012

Public Works Agency

*Ventura County
Watershed
Protection District*



Proposition 84 Implementation Grant
Round 2 Cycle
District's Candidate Projects

September 6, 2012

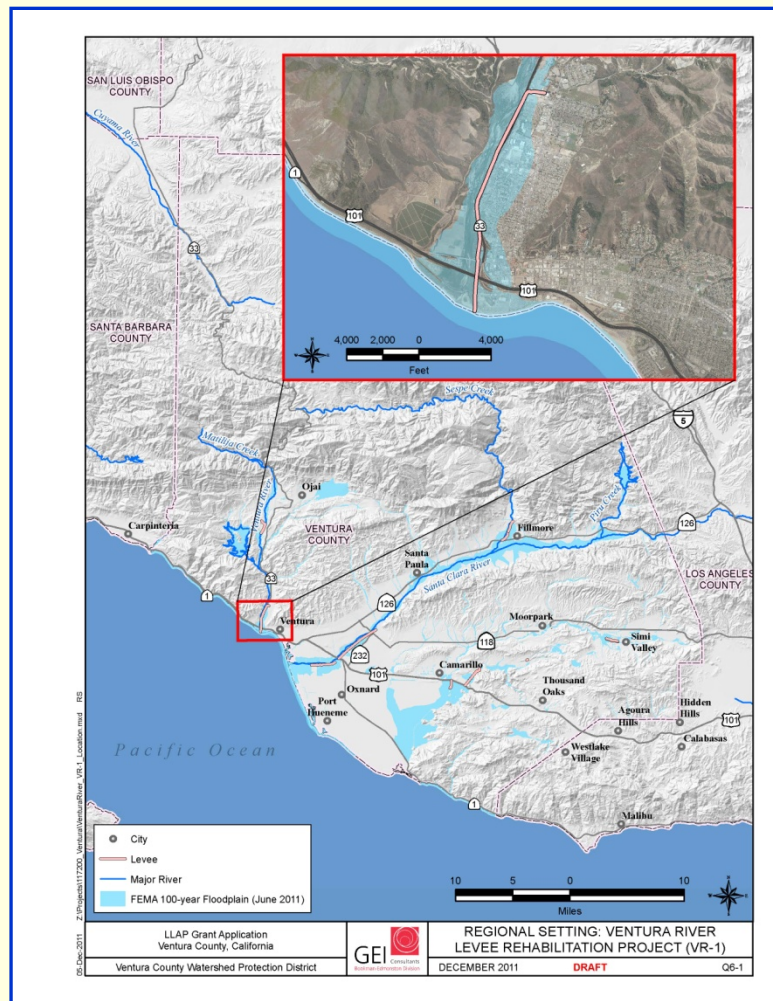


Three Candidate Projects

Project Name	Project Description	Grant Funding Requested
VR-1 Levee Flood Protection and River Parkway Enhancement Study Project	Study on the best way to integrate opportunities for river parkway enhancements and recreational trail opportunities into the four project design alternatives for the VR-1 Levee	\$350,000
San Antonio Creek Spreading Grounds Rehabilitation Project (V-2)	Increase local groundwater storage and recharge in the Ojai Valley Groundwater Basin by rehabilitating four existing ponds, and constructing a new intake structure, monitoring well, diversion piping and channels, and four passive percolation wells	\$815,000
Non-Native Invasive Plant Removal within the Upper Ventura River Watershed and Recreation Enhancement Project	Proactive removal of non-native invasive plant in order to restore native habitat, provide flood and fire control, increase water supply, and improve water quality in a 4-mile reach of the Ventura River Downstream of Hwy 150 to Foster Park. Project includes development of Steelhead Preserve Education and Conservation Center.	\$1,000,000

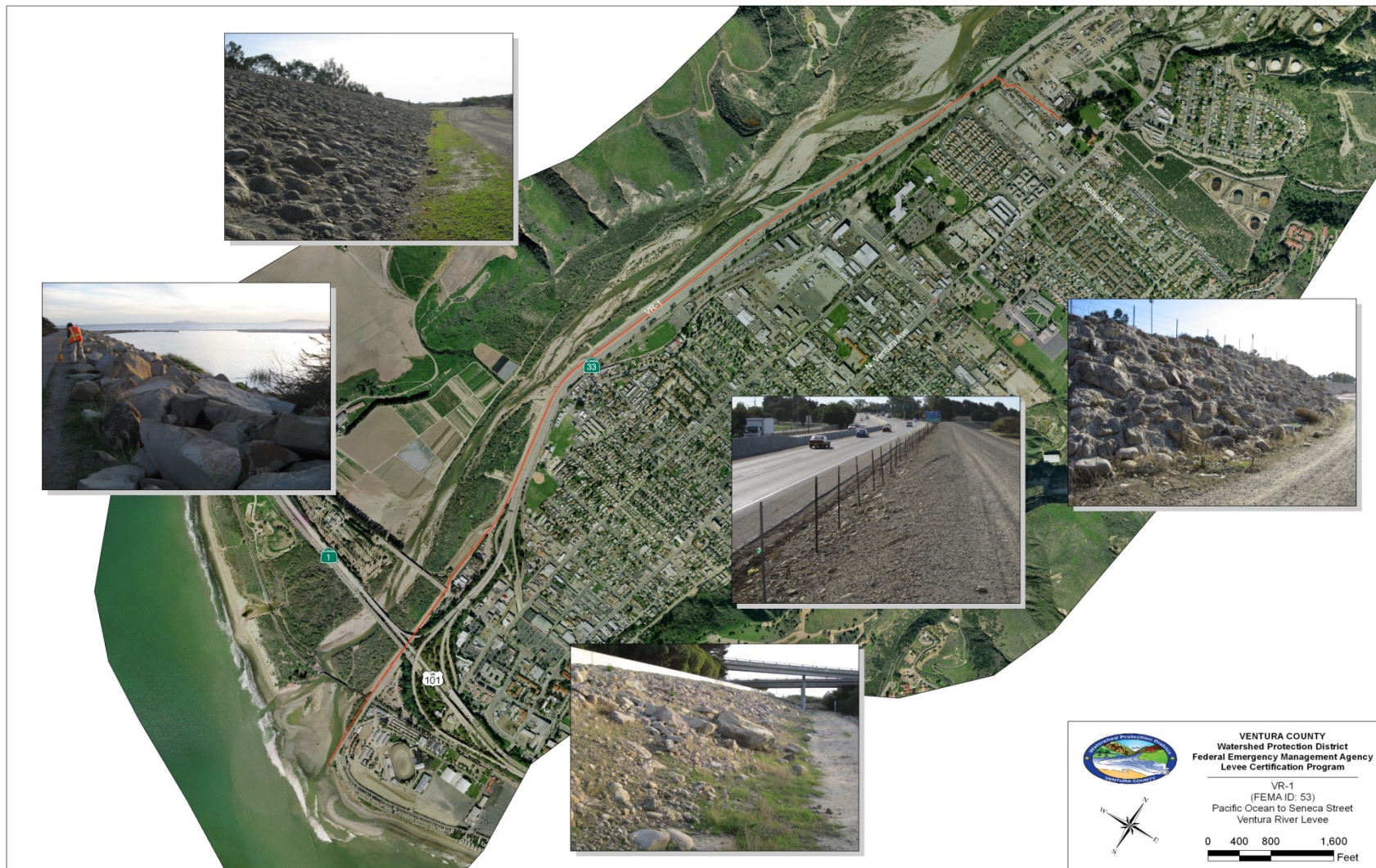


Ventura River Levee (VR-1)



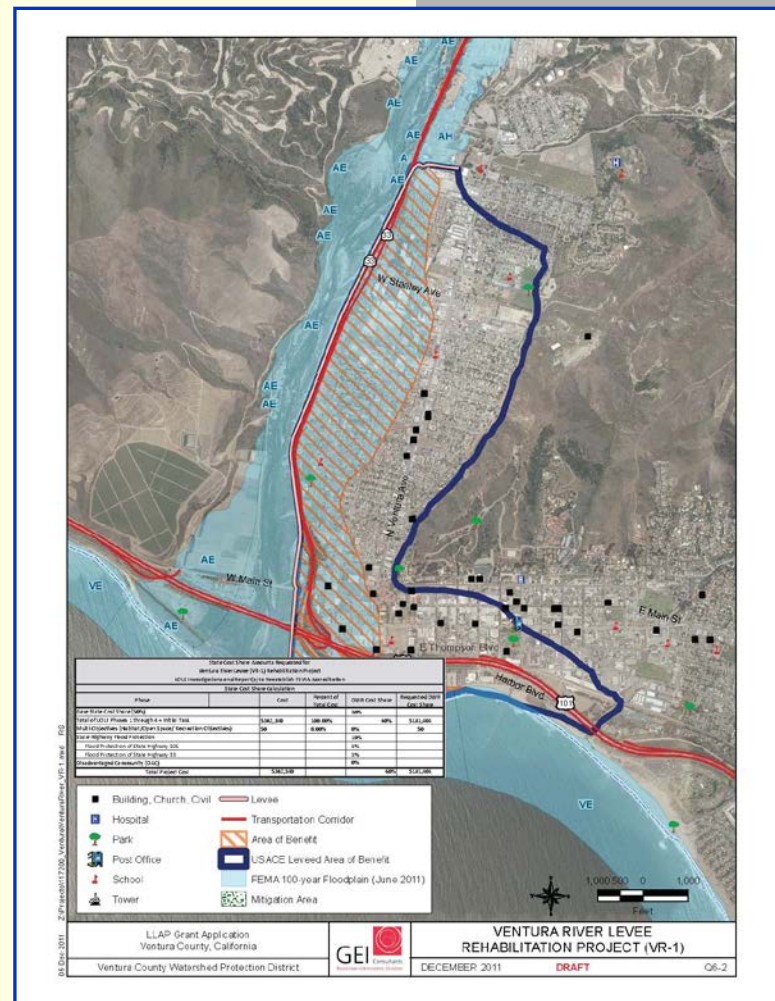
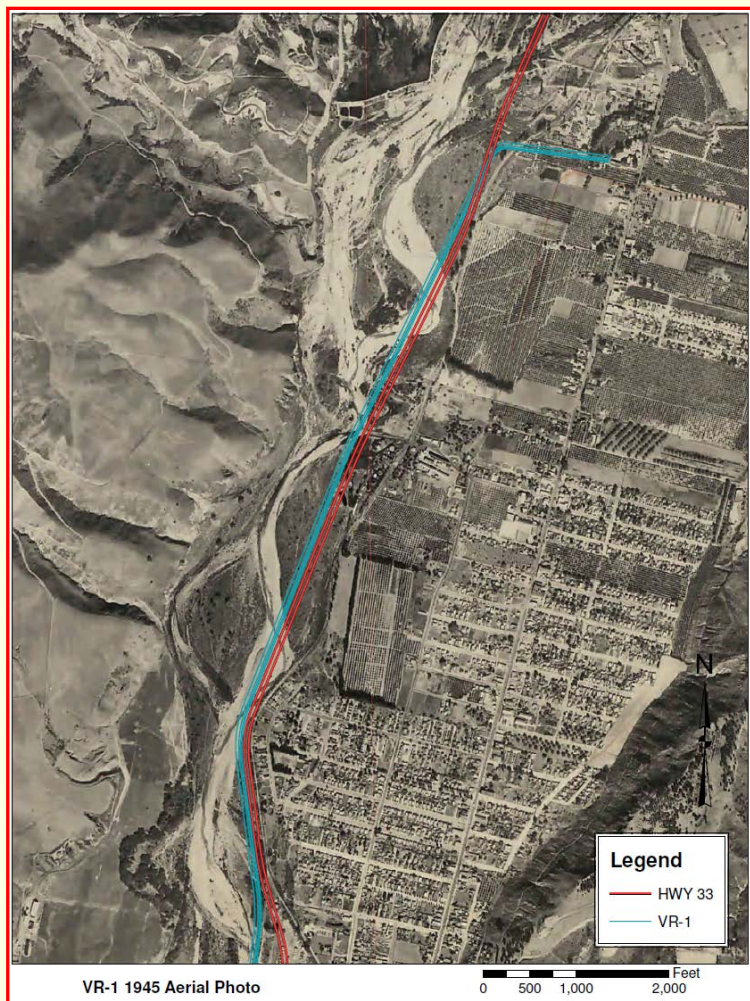


VR-1 Levee Post Construction Changes





Ventura River History and VR-1 Levee Rehab Action Plan





SACSGRP Site Vicinity Map

Public Works Agency





SACSGRP Site Photos

Existing Spreading Grounds Ponds

San Antonio Ck near Intake Location



View East



View Downstream (west)



SACSGRP Conceptual Design

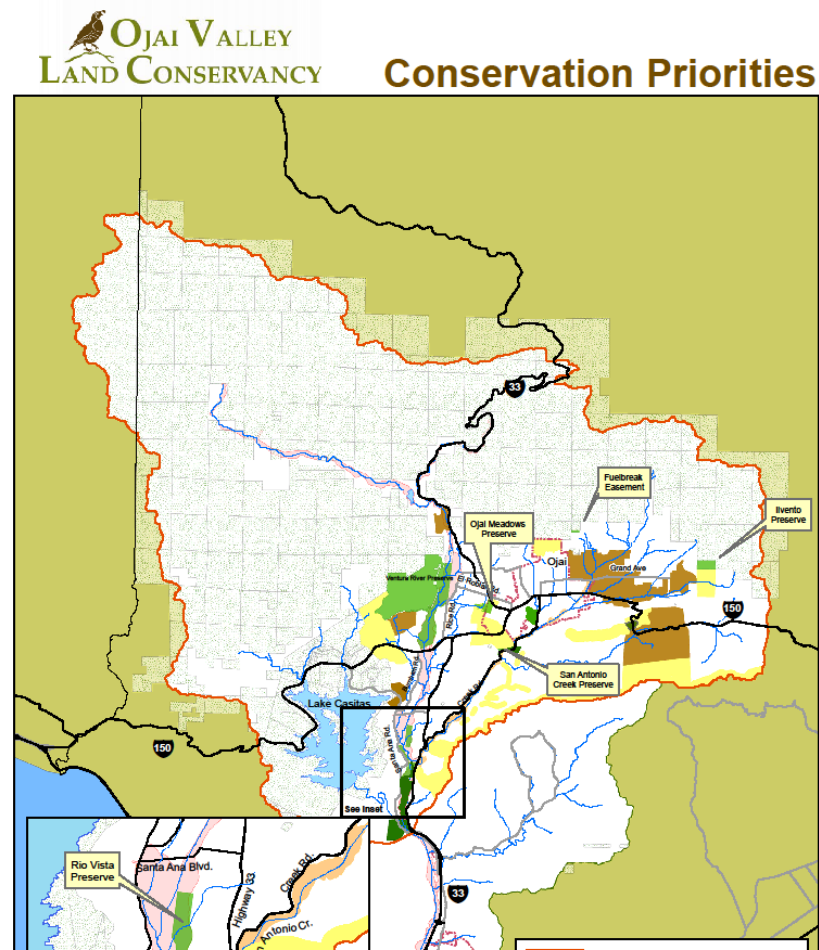
San Antonio Creek Spreading Grounds Rehabilitation Project





Ventura River Watershed

- Overview map of watershed
- Provides context of watershed wide conservation project priority planning
- Identifies property ownership to help facilitate selection of optimal project areas



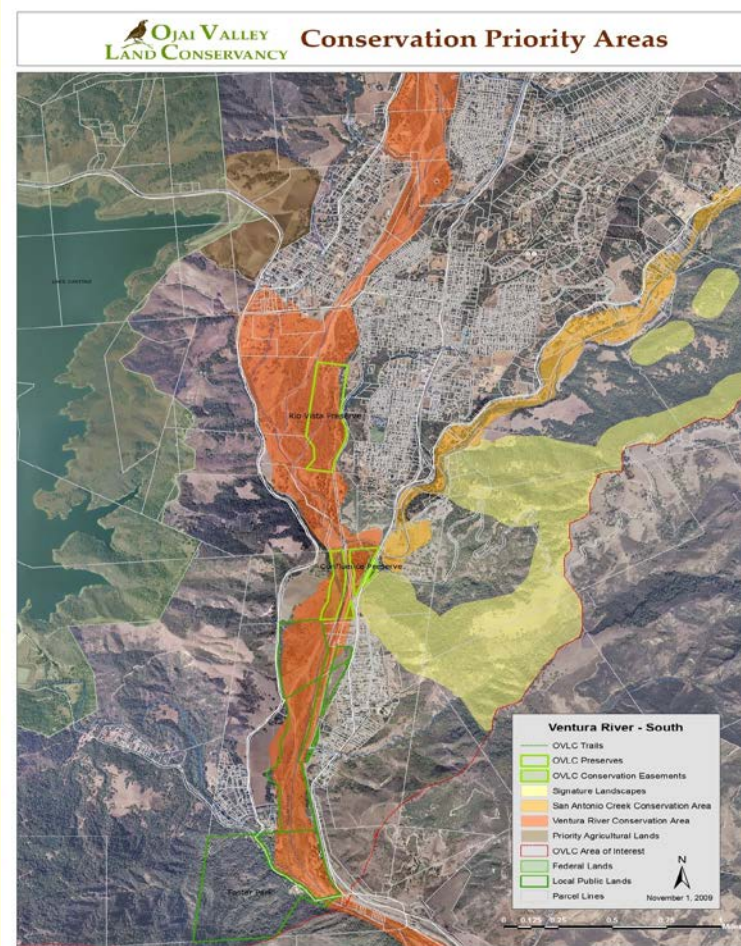
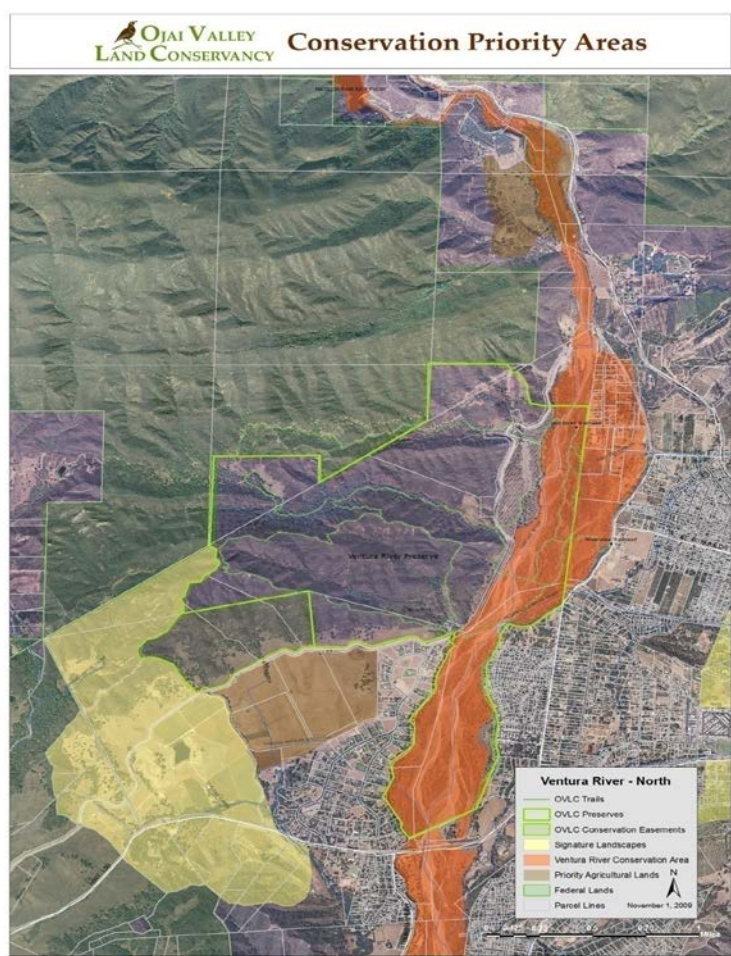


Ventura River: Conservation Priority Area Maps

North of Hwy 150

South of Hwy 150 to Foster Park

Public Works Agency





Ventura Steelhead Preserve Education and Conservation Center

Public Works Agency





Questions?

Gerard Kapuscik, Manager
Strategic Decision Support Group
Ventura County Watershed Protection District
Ph: (805) 648-9284
E-mail: "gerard.kapuscik@ventura.org"

Greg Gamble, Executive Director
Ojai Valley Land Conservancy
Ph: (805) 649-6852 Ext 1
E-mail: "greg@ovlc.org"