

# New California Groundwater Management and Stormwater Legislation

Presentation to Ventura River Watershed Council  
October 7, 2014

Gerhardt Hubner, P.G.  
Deputy Director  
Watershed Protection District

# Senate Bill 985:

## Stormwater Resource Plans

- Bill's intent: Improve the storm water resource planning process to encourage the capture and use of storm water and dry weather runoff.
- Storm Water Resource Plans - Identify opportunities to use parks, school sites, government office buildings and complexes, and other existing publicly owned lands.
- Voluntary Program (but then In-eligible for future State Grants & Loans).
- Ventura Countywide Stormwater Program – Well Staged to Implement this Legislation Through Recent GIS Efforts.

# SB 1168 (Pavley), SB 1319 (Pavley), AB 1739 (Dickerson)

- On September 16, 2014, the Governor signed a bill package with the intent to sustainably manage California's groundwater.
- Goals:
  - Measurable Objectives - Interim milestones in increments of five years, and
  - Meet Objectives within 20 years of the implementation of the Adopted Plan.

# Why Was this Legislation Necessary? (Legislation Findings)

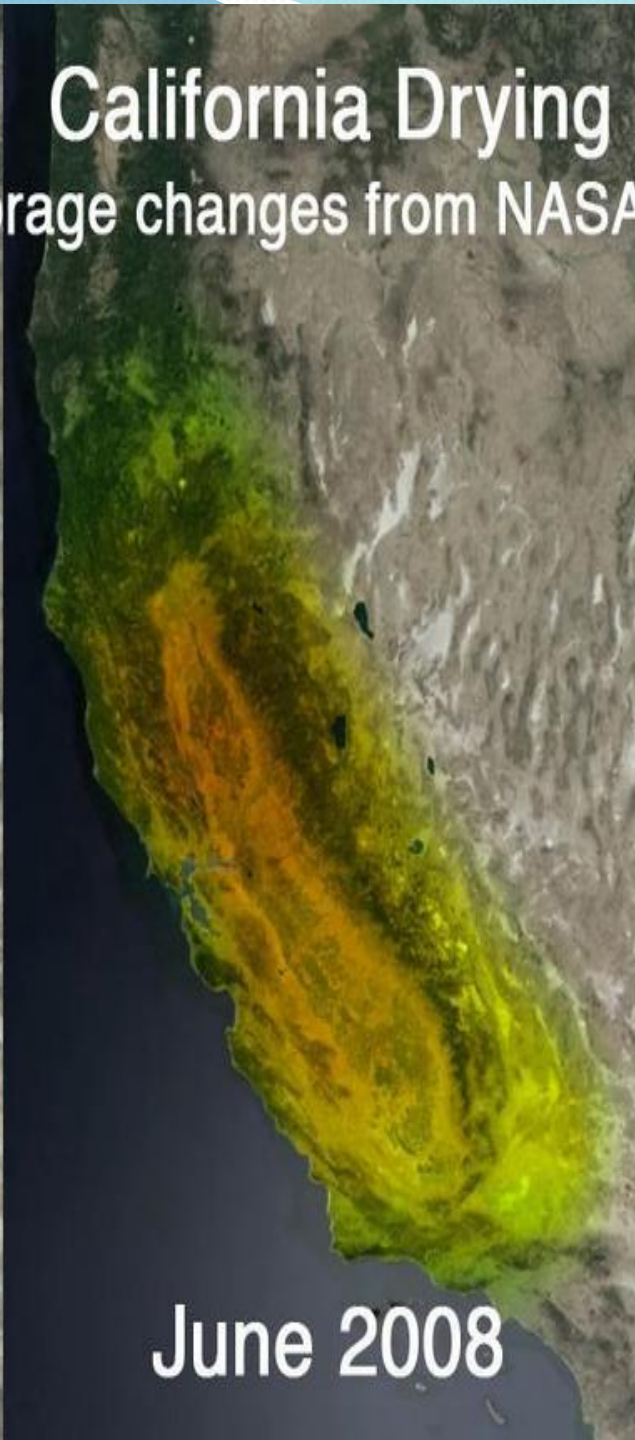
- Necessity of Integrated Surface and Groundwater Management to Meet State's Water Management Goals.
- Deteriorated Water Quality & Environmental Damage & Irreversible Land Subsidence Occur when Groundwater is Not Properly Managed.
- Sustainable Groundwater Management is Part of CA Water Plan; and
- Sustainable Groundwater Management will Respect Overlying and Other Property Rights.

# California Drying

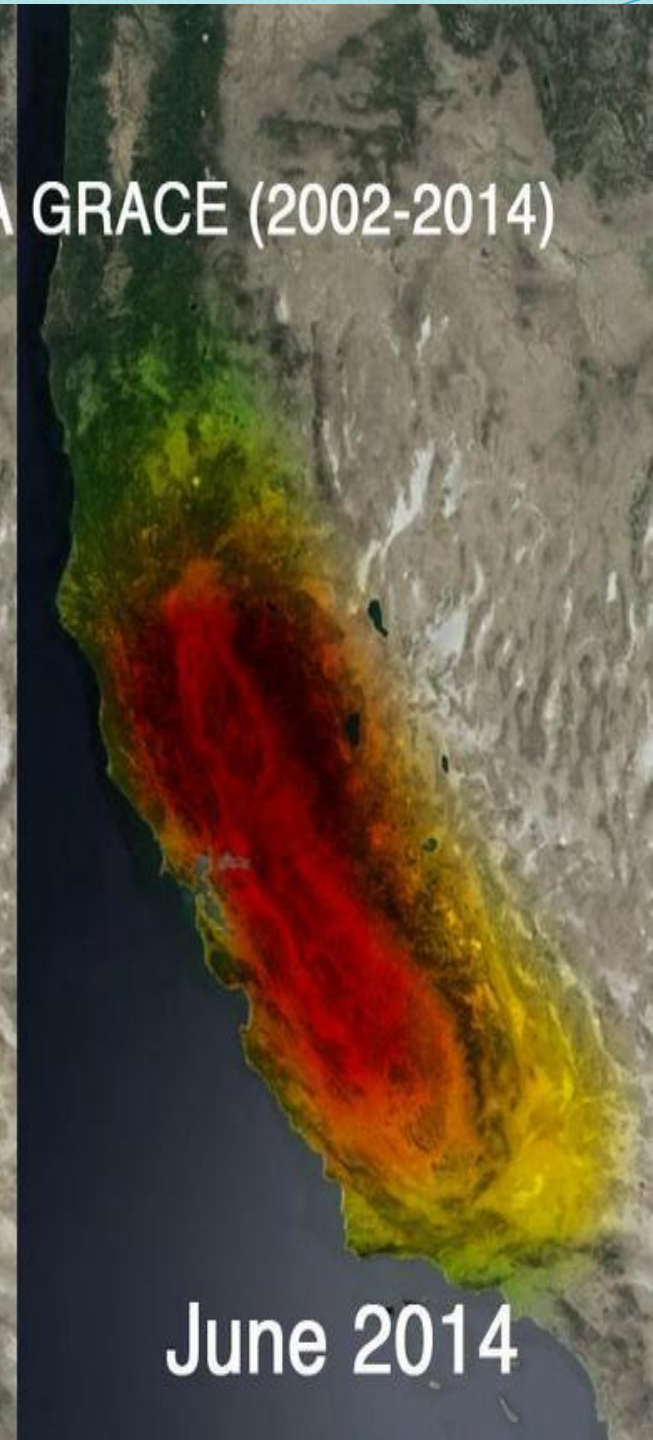
Cumulative water storage changes from NASA GRACE (2002-2014)



June 2002



June 2008



June 2014

# Governance

- Empowering Local Agencies to work cooperatively with each other and sustainability manage groundwater through development of Groundwater Sustainable Plans (GSPs) at Basin or Sub-basin level.
- “*Groundwater Sustainability Agency (GSA)*” - Single Local Agency or combination of local entities that elects to assume responsibilities.
- GSA Formed by Joint Powers Agreement, Memorandum of Agreement or Other Legal Instrument.
- County is Default if No Local Agency Interested, or Able.
- Local Agency GSA - Public Noticing Requirements

# Operations

- Well Registration
- Flow Meters
- Control Extractions
- Reporting of Extractions (Personal Information In Reports Confidential)
- Investigations (Geology/Hydrogeology, Water Balance, Data Collection)
- Monitoring (Water Level and Water Quality)
- Modeling, and Special Studies
- Inspections
- Compliance Assistance & Enforcement (Including Penalties)
- Annual Report (Including Surface and Groundwater Use)

# Fiscal

A GSA that adopts a Groundwater Sustainability Plan may impose fees on the extraction of groundwater from the basin to fund costs of groundwater management, including:

- Administration, operation, and maintenance, including a prudent reserve.
- Acquisition of lands or other property, facilities, and services.
- Supply, production, treatment, or distribution of water.
- Plan Development, and other activities necessary to implement the GSP.



# Groundwater Supply

- Transport, Reclaim, Purify, Desalinate
- Purchase, Transfer, Deliver or Exchange
- Conserve, Storage, Spread or Replenish
- Acquire Lands or other Property, Facilities, and Services
- Supply, Produce, Treat and Distribute
- Appropriate and Acquire:
  - Surface water or groundwater rights,
  - Import surface water or groundwater into the agency, and
  - Conserve and store that water within or outside the agency

# Groundwater Quality

- Wellhead protection areas and recharge areas
- Control of migration of contaminated groundwater
- Establish well abandonment and well destruction program (as authorized by the County)

# GSP Development

- Beginning January 1, 2015, new Groundwater Management Plans cannot be adopted, and an existing Groundwater Management Plan cannot be renewed
- By January 1, 2017, DWR will publish best management practices for sustainable management of groundwater
- Preparation and adoption of a Groundwater Sustainability Plan is exempt from the California Environmental Quality Act (CEQA), but Projects are Not.

# GSP Components

- Groundwater Extraction and Elevation Data
- Surface Water Supply
- Total Water Use
- Change in Groundwater Storage
- Water Budget
- Sustainable Yield
- Control of Saline Intrusion
- Wellhead Protection and Recharge Areas
- Mitigation of Contaminated Groundwater
- Well Abandonment and Destruction Program
- Replenishment Program
- Conjunction Use
- Well Construction Policies
- Measures for Groundwater Contamination, Recycling, Diversions to Storage, Extraction Projects...
- Water Efficiency Practices/Programs
- Relationships with State & Federal Regulatory Agencies

# Cooperative Approach to GSPs

- Provides for Public Involvement in development of GSPs;
- Sharing of common data and coordination to achieve basin objectives;
- Consider the interests of all beneficial uses and users of groundwater (Agriculture, M&I, Water Purveyors, Environmental);
- Consider interaction between surface water and groundwater; and
- Coordination with local Land Use planning efforts (General Plans)

# State Involvement

- Adopted Groundwater Sustainability Plans subject to Department of Water Resources (DWR) review and evaluation;
- DWR to provide Technical Assistance to GSAs;
- State Water Resources Control Board (SWRCB) will act as the backstop agency to ensure, and intervene, for those groundwater basins with:
  - Inadequate GSPs, or
  - GSPs that are not being implemented, or
  - Where there was no election by a local agency to be the groundwater sustainability agency.
- “Probationary” Designation: For Inadequate GSPs - Interim Plans and Steps to Return to Local Control.

# Sustainable Groundwater Management Act - Milestones

DATE	ACTIVITY
January 31, 2015	DWR: Initial Priority for Each Basin
January 1, 2016	DWR: Adopt regulations for criteria to modify Groundwater Basin Boundaries
June 1, 2016	DWR: Adopt regulations for acceptable Groundwater Sustainability Plans
June 30, 2017	Groundwater Sustainability Agency must be identified for Basins ( <i>State Board can step in if entity not formed</i> )
January 31, 2020	Adoption of GSP for Overdrafted Basins ( <i>DWR refers deficient plans to State Water Board</i> )
January 31, 2022	Adoption of GSP for Non-overdraft Basins ( <i>DWR refers deficient plans to State Water Board</i> )

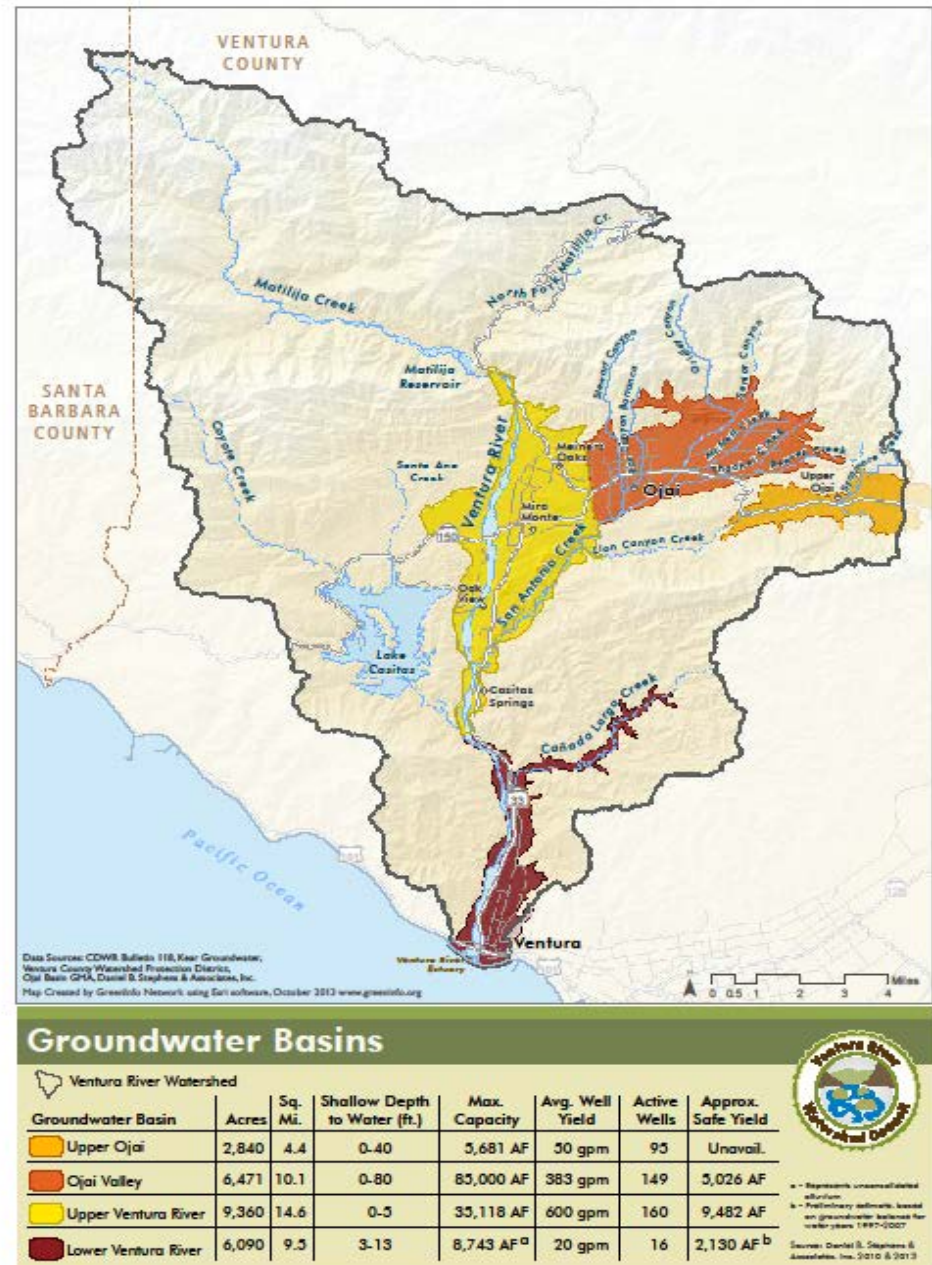
# What Does This Mean For the Ventura River Watershed?



# Ventura River Watershed Groundwater Basins

## Map – Watershed Management Plan

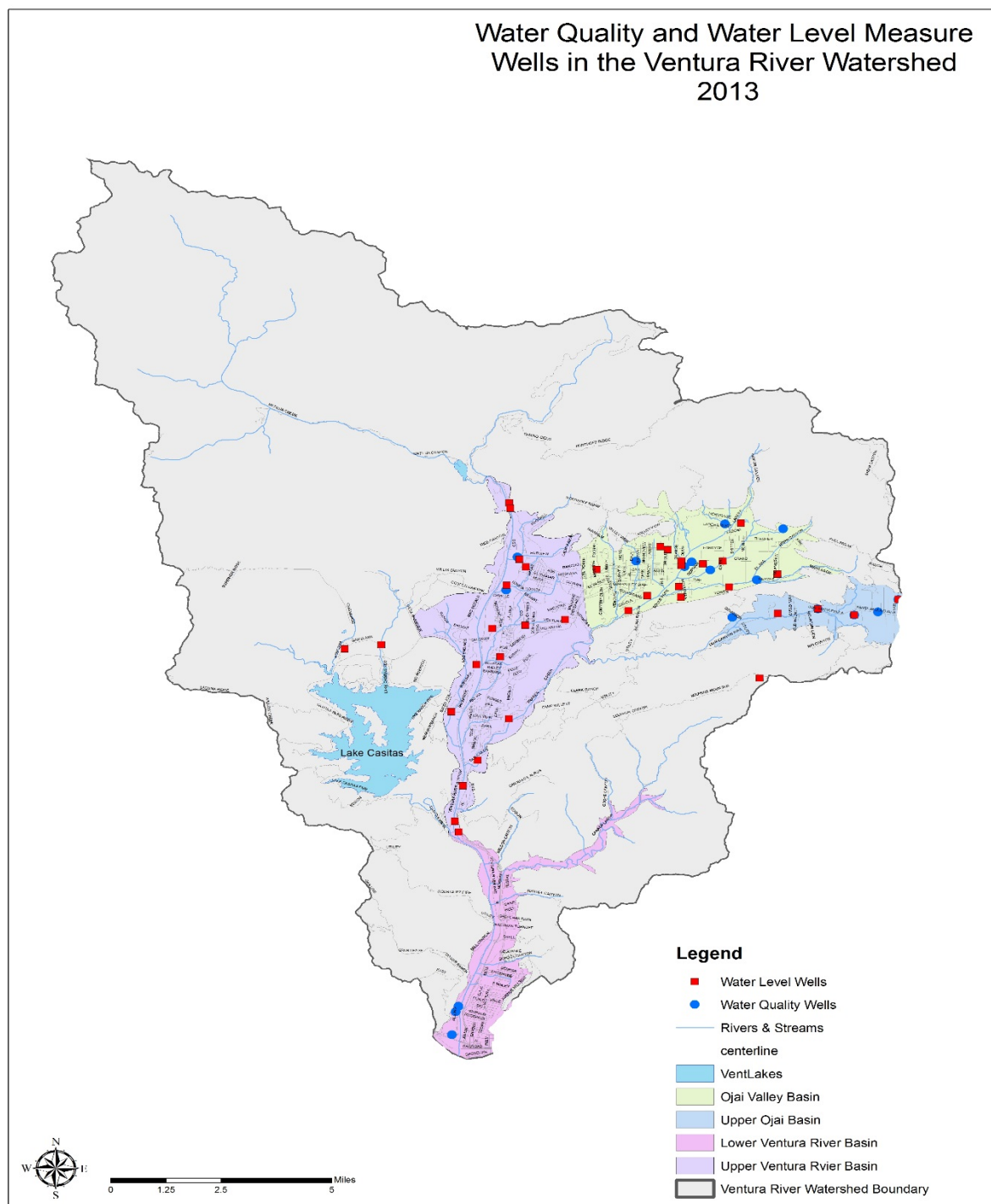
- Acres and Square Miles
- Depth
- Average Well Yield
- Active Wells #s
- Approximate Safe Yield



# Water Quality & Water Level Measurements

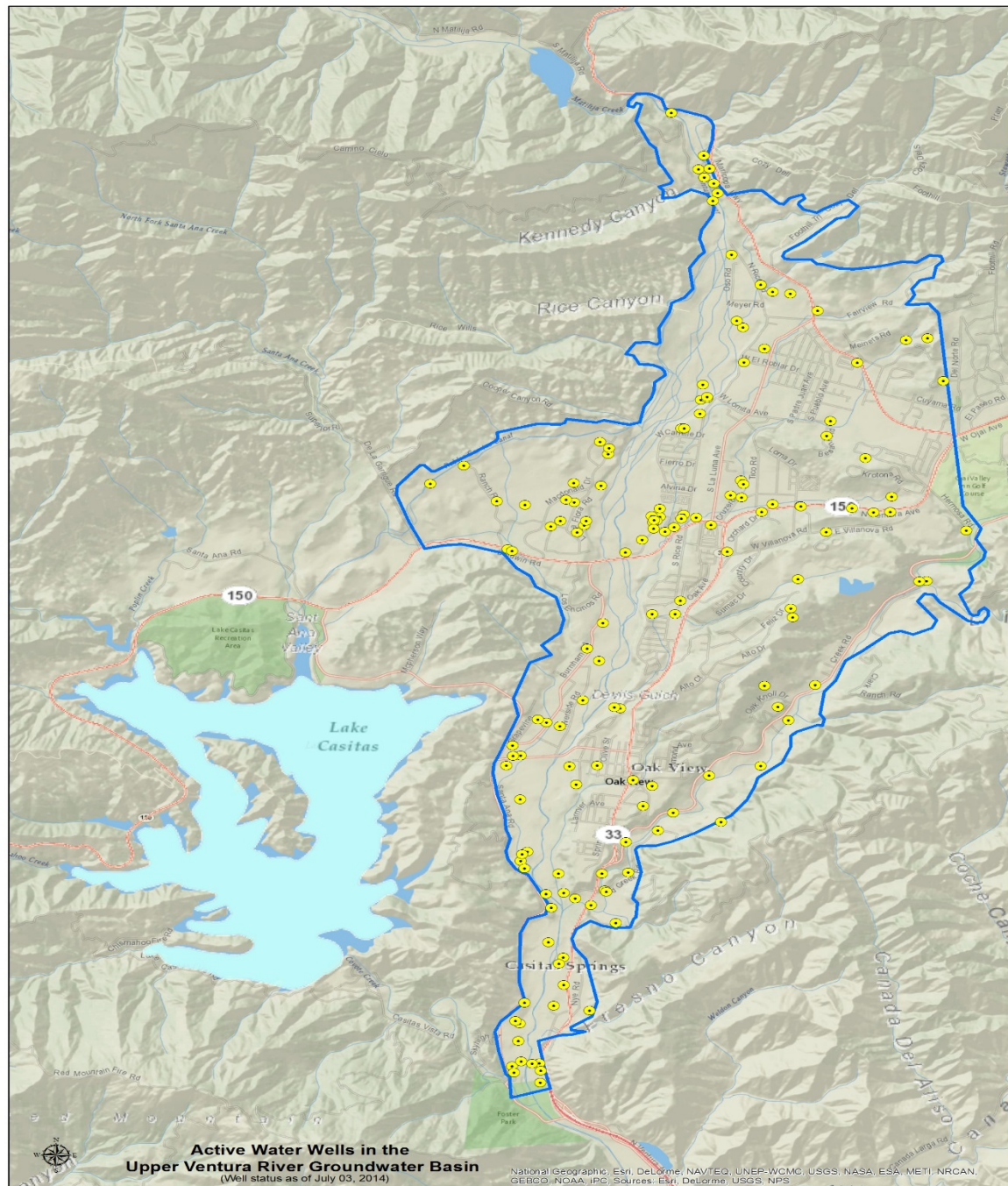
## Ventura River Watershed

2013



# Active Water Wells

# Upper Ventura River Groundwater Basin



### Legend

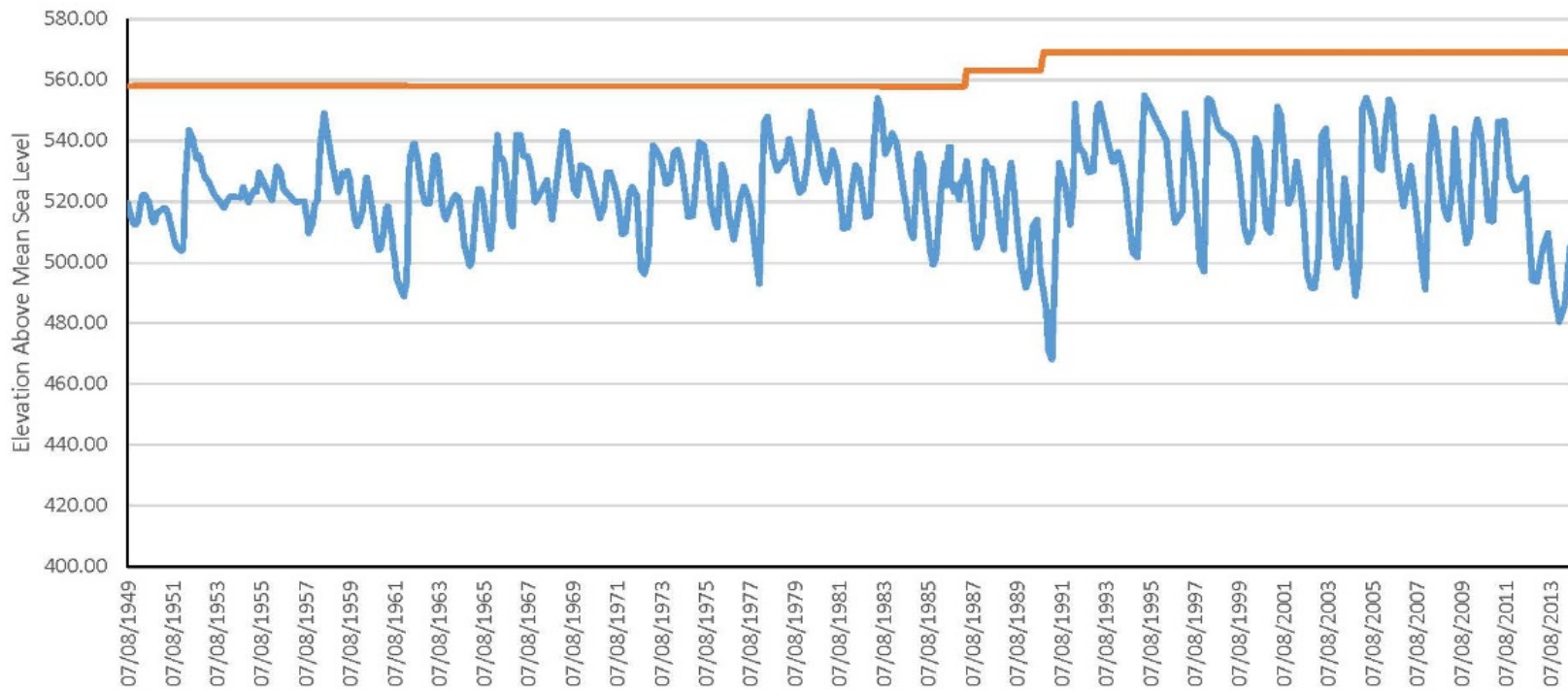
- Upper Ventura River Basin
- Active Wells

0 2,000 4,000 Feet

DISCLAIMER: The information contained herein was created by the Ventura County Water Conservation District, Water & Environmental Planning Division for the user's use. The VCWCD assumes no liability for damages incurred directly or indirectly as a result of errors, omissions or discrepancies.

### Upper Ventura River Hydrograph - 04N23W16C04S

Elev above mean sea level      Reference Point Elev

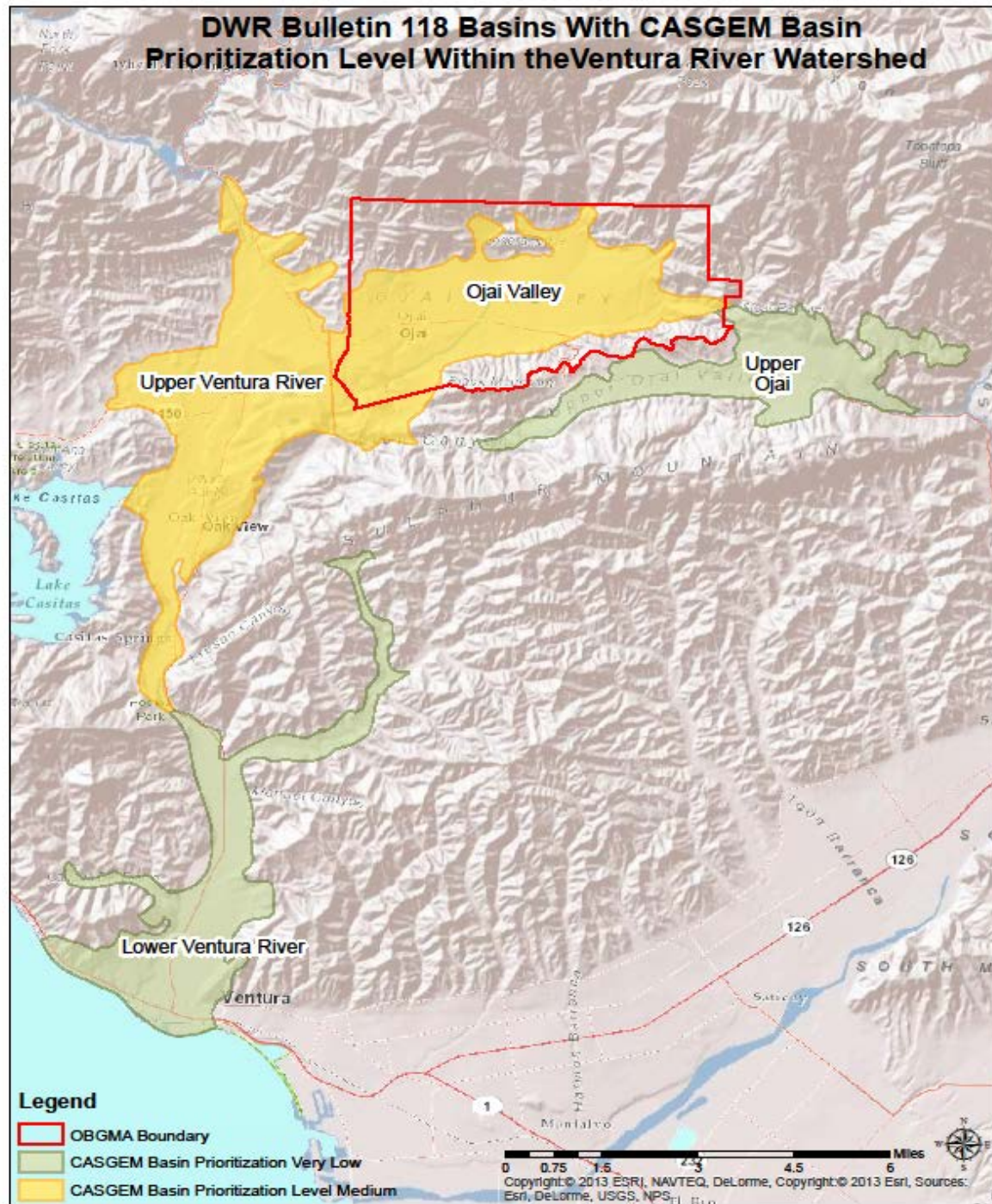


# Ventura River Watershed

Groundwater Basins In Relation to California Department of Water Resources' Bulletin No. 118

And

CASGEM's Basin Prioritization



# Current Efforts & Future Next Steps

- District staff will work with County Counsel to better understand the authorities, limitations and responsibilities of the County and District granted by the new legislation; and
- District staff will work with DWR and local agencies, and stakeholders to better understand the impacts of the new legislation on them, and
- Continue to Engage on how best to proceed with Implementation with future GSAs and developing Groundwater Sustainability Plans.

**Ventura County  
Watershed Protection District  
Water & Environmental Resources Division**

Any  
Questions?

Go to the County  
of Ventura  
PWA/WPD website

[http://pwaportal.ventura.org/  
WPD/docs/Groundwater-  
Resources/2013-Groundwater-  
Section-Annual-Report-  
Final\\_Web.pdf](http://pwaportal.ventura.org/WPD/docs/Groundwater-Resources/2013-Groundwater-Section-Annual-Report-Final_Web.pdf)



2013 Groundwater Section  
Annual Report